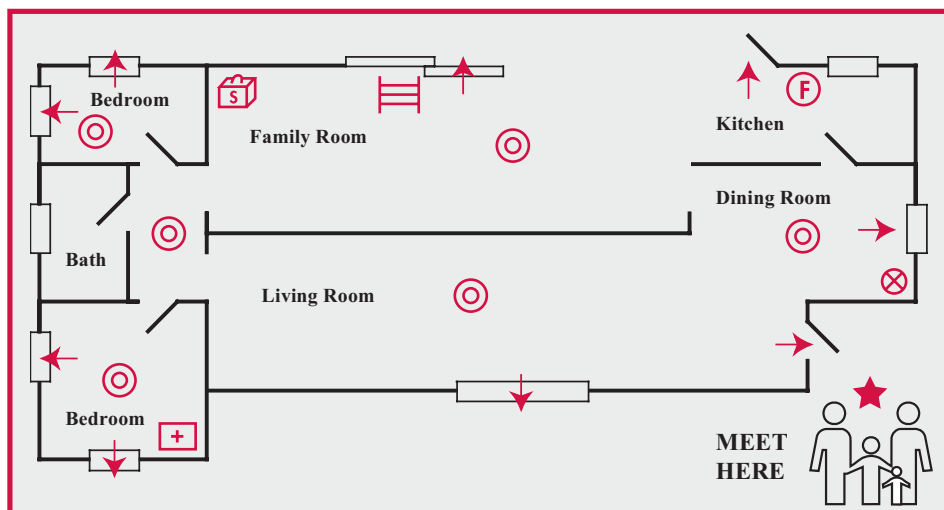


# Family Emergency Floor Plan

Sample Floor Plan



## Legend

- Emergency Exit Route
- Fire Extinguisher
- Smoke Detectors
- Disaster Supplies Kit
- Doors
- Collapsible Ladder
- Reunion Location (Outside)
- Stairways
- Utility Shut Off
- Windows
- First Aid Kit

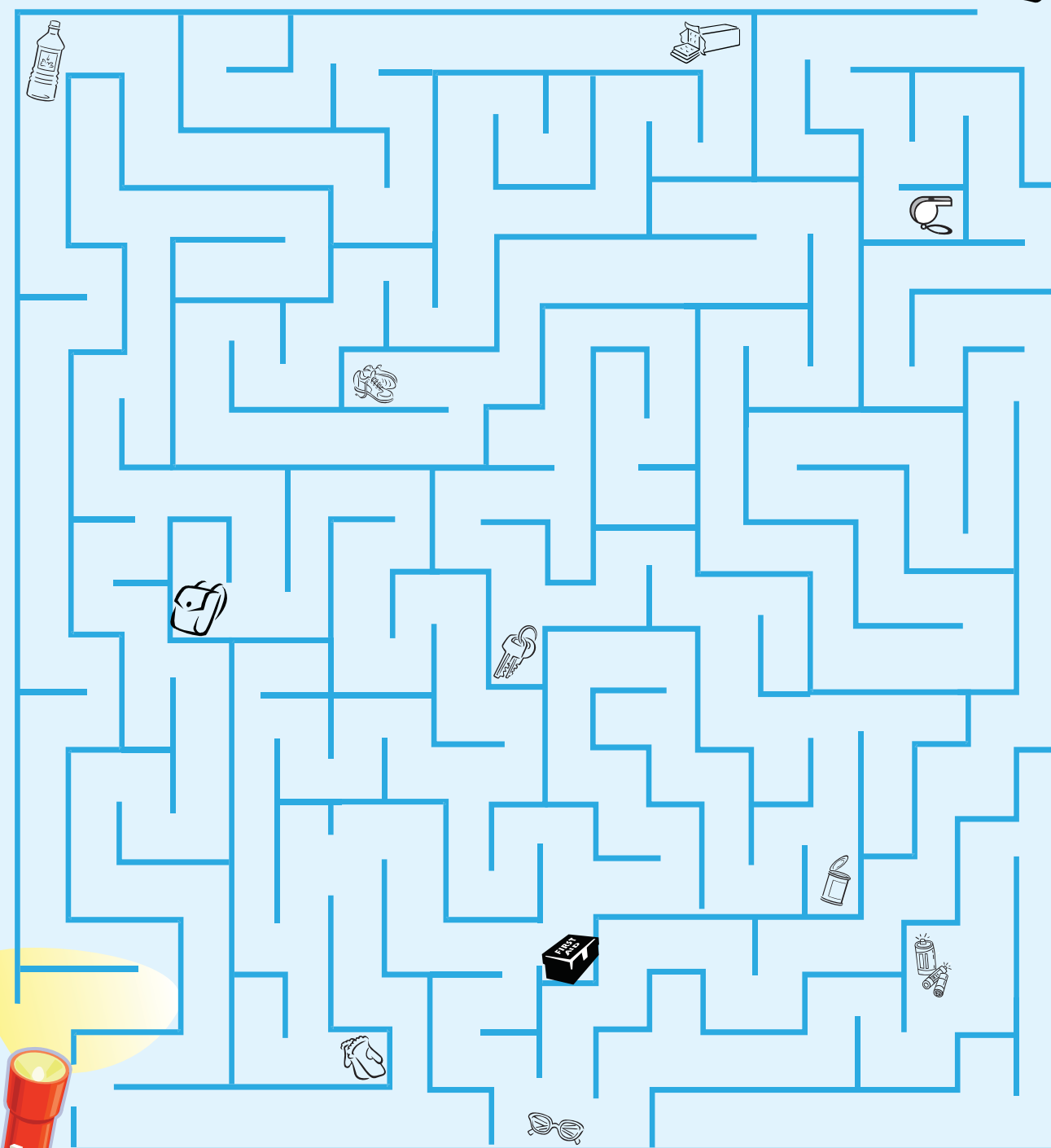
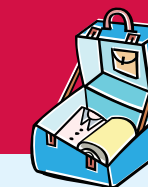


Floor One



Floor Two

# Create an Emergency Plan with your family



Help Flash Light & friends find their way!



City of Chicago  
Richard M. Daley, Mayor



Office of Emergency Management  
and Communications  
Andrew Velasquez III  
Executive Director

# Introduction

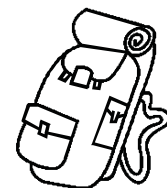


Families must work together to prepare for unexpected situations. During an emergency, every member of your family will need to know what to do, what to take, and where to go to get to safety.

Family emergency planning can be the key to surviving an emergency. It is important to make sure your family talks about how they will prepare for various emergencies.

Here are some things to consider:

- **Determine the best escape routes from your home.** Identify at least two separate escape routes and practice using them.
- **Designate two locations to meet in case it is impossible to return home or if you have to evacuate.** Choose one near your home and one outside the neighborhood. Make sure your family knows the address and phone number of both locations.
- **Designate an out-of-area contact person.** This person should be far enough away that it is unlikely he or she would be affected by the same emergency. Family members should call this person to report their location if they cannot reach each other.
- **Create an Emergency Supply Kit**
  - Make sure that all members of your household know where these supplies are.
- **Make sure your family is familiar with emergency plans at places that are a part of your every-day life such as school, work, daycare, church, etc.**



The fun activity pages in this booklet will help you and your family get started on making an emergency plan and emergency supply kit.

Be sure to complete both sides of the last page with all of your family. When you are finished, cut it out, make copies and post one in a place where all of your family can see it.

To get more information visit [alertchicago.com](http://alertchicago.com)



No power, food, or water . . .

Do you have a plan?

Visit our website at [www.alertchicago.com](http://www.alertchicago.com) to learn more



# Family Emergency Plan

## Out-of-State Contact

Name \_\_\_\_\_

City \_\_\_\_\_

Telephone (Day) \_\_\_\_\_ (Evening) \_\_\_\_\_

## Local Contact

Name \_\_\_\_\_

Telephone (Day) \_\_\_\_\_ (Evening) \_\_\_\_\_

## Nearest Relative

Name \_\_\_\_\_

City \_\_\_\_\_

Telephone (Day) \_\_\_\_\_ (Evening) \_\_\_\_\_

## Family Work Numbers

Father \_\_\_\_\_ Mother \_\_\_\_\_

Other \_\_\_\_\_

## Emergency Telephone Numbers

In a life threatening emergency, dial 911. Non-emergency, dial 311.

Police Dept. \_\_\_\_\_ Fire Dept. \_\_\_\_\_

Hospital \_\_\_\_\_

## Family Physicians

Name \_\_\_\_\_ Telephone \_\_\_\_\_

Name \_\_\_\_\_ Telephone \_\_\_\_\_

## Reunion Locations

1. Right outside your home \_\_\_\_\_

2. Away from the neighborhood, in case you cannot return home \_\_\_\_\_

Address \_\_\_\_\_ Telephone \_\_\_\_\_

Route to try first \_\_\_\_\_

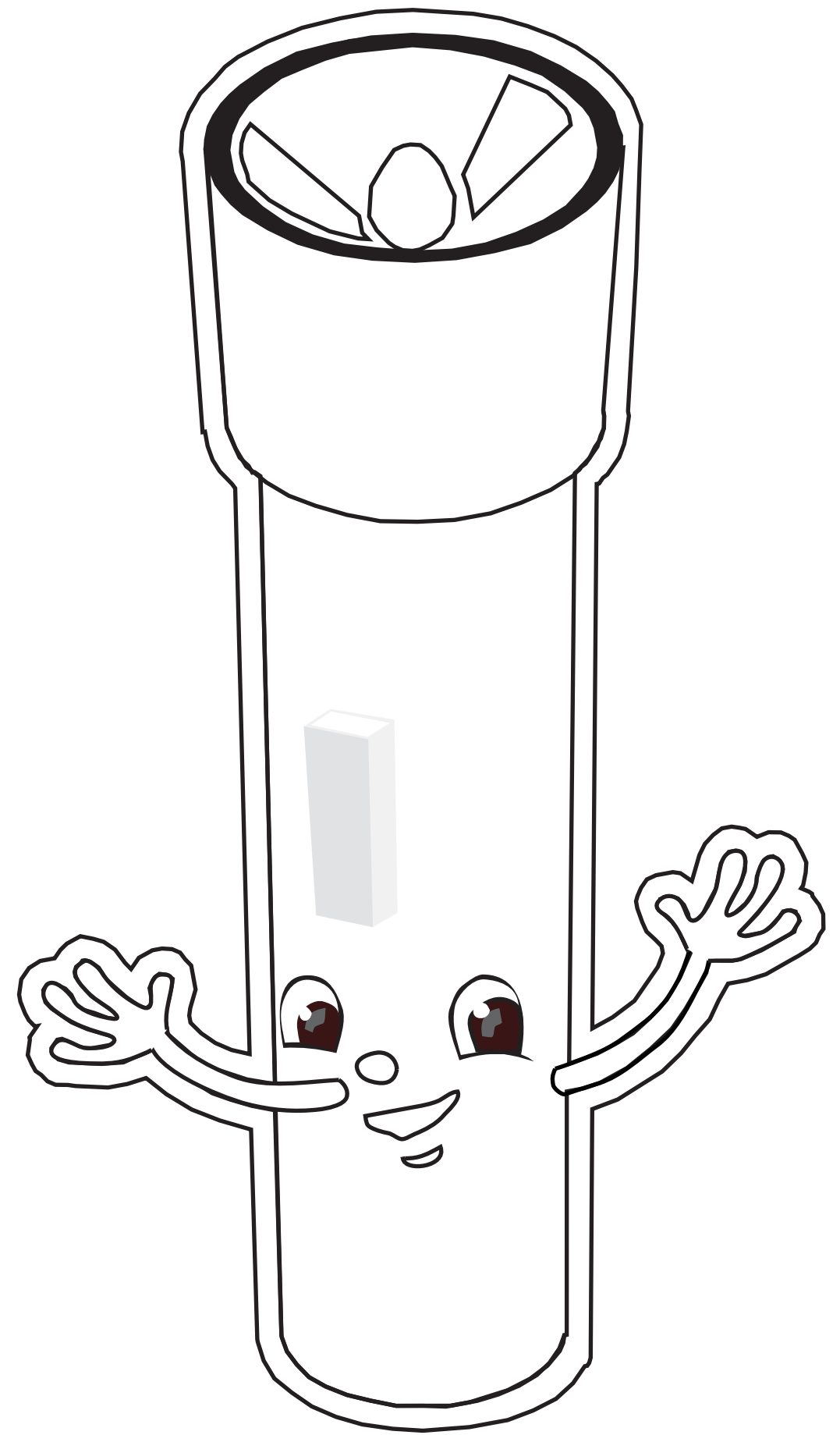
# Emergency Preparedness Word Search

L E A F B E H S C Y L C D Q O  
 C A R D A O C U Q F T I P I Q  
 T S E J Q M G P I R N K D N F  
 U F N P X F I P Q P L A H K J  
 A B O W Z J W L E N R D Z U B  
 M G H R W W G Y Y J E A B A C  
 A V P O G A U K B P O T C N W  
 F K L A H W H I H N L K S J L  
 Y I P U Z E M T K U P A E I N  
 M E E T I N G P L A C E N N L  
 B M J Y D O S L C Y T E F A S  
 G U J C A L M K M L O L K J C  
 E N O D L S W K E H F N L T L  
 H C H P V Q E J M I Q S L J S  
 A F Q S Z Q K N L V M O T X N

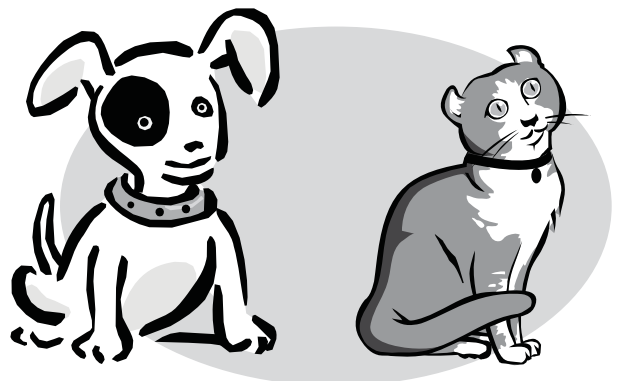
Words to find:

- BACKPACK
- CALM
- FAMILY PLAN
- LISTEN
- MEETING PLACE
- PHONE
- RADIO
- SAFETY
- SUPPLY KIT

# Give Flash Light Some Color



# Don't Forget About Your Pets



- Make sure your pets all have licenses and ID tags.
- Ask local shelters and animal clinics if they provide emergency foster care.
- Be sure to have a leash, pet carrier, and plastic bags for waste.
- Arrange with your neighbors to care for your pets if an emergency occurs while you are away from your home and cannot return.
- Know your pets' hiding places so you can find them.

