




#AskDrArwady

June 27, 2023



WILDFIRE SMOKE CAUSING UNHEALTHY AIR QUALITY



As Canadian wildfire smoke continues to impact air quality, Chicagoans should limit exposure by avoiding extended time and strenuous activity outdoors.



JOIN US!

COMMUNITY ENGAGEMENT SESSION

WEDNESDAY, JUNE 28, 2023

GEORGE HENRY CORLISS HIGH SCHOOL

821 E. 103rd Street,

Chicago IL

Doors open at 6:00 pm, Meeting at 6:30 pm

Learn more about the Assessment, its partners and how we're working to promote environmental justice at Chicago.gov/cumulativeimpact.





APPLICATION NOW OPEN

CHICAGO ARTS & HEALTH PILOT FOR CREATIVE WORKERS

A paid job training program for artists with health, healing, and wellness as part of their creative practice

APPLICATION DEADLINE IS THURSDAY JUNE 29, 2023 AT 5PM CT **EXTENDED!**

MORE INFO

CHICAGOCULTURALGRANTS.ORG



Made possible in part by a grant from FGC, A Builders Initiative Foundation Entity



Chicagoculturalgrants.org



Application
Extended: Due
June 29

- The Chicago Arts & Health Pilot for Creative Workers is a program of the Department of Cultural Affairs and Special Events (**DCASE**) in partnership with the Chicago Department of Public Health (**CDPH**) and **City Colleges of Chicago**.
- This pilot aims to **strengthen trauma-informed and culturally responsive health services** in communities disproportionately impacted by the COVID-19 pandemic.
 - The program explores career pathways for artists centered in creative therapy and trauma-informed care by **establishing one-year artist apprenticeships**.
- Selected artists will be trained as community health workers to offer creative wellness strategies to clients served at the **City's five mental health clinics**.
 - Sites for placement include North River Clinic (North Park/Albany Park), Lawndale Clinic, Greater Grand Clinic (Bronzeville), Greater Lawn Clinic, and Englewood Clinic, all targeted communities in CDPH's trauma informed care network.
 - Priority will go to artists from and/or with **existing community connections** to the neighborhoods that the City's mental health clinics serve.
 - Artists from **community areas that have been hardest hit by the pandemic** will also be given high priority for consideration.





CHICAGO
 DON'T LET ANYTHING
 STAND IN THE WAY
 OF YOUR
PRIDE

*Get the facts on monkeypox, STIs,
 and HIV right now.*

→ CHICAGO.GOV/MONKEYPOX
 → CHICAGO.GOV/HIV-STI




CHICAGO

PRIDE > MIEDO
 NO DEJES QUE NADA SE
 INTERPONGA EN EL CAMINO
 DE TU PRIDE.


CDPH
Chicago Department
 of Public Health



Mpox Update

June 27, 2023

Chicago Mpox (Monkeypox) Case Summary



Data last updated 6/26/2023. Counts include cases with specimen collections through 6/21/2023 to account for reporting lags. Data are updated on Mondays and Thursdays at 2:00p.m., except for City holidays. All data are provisional and subject to change.

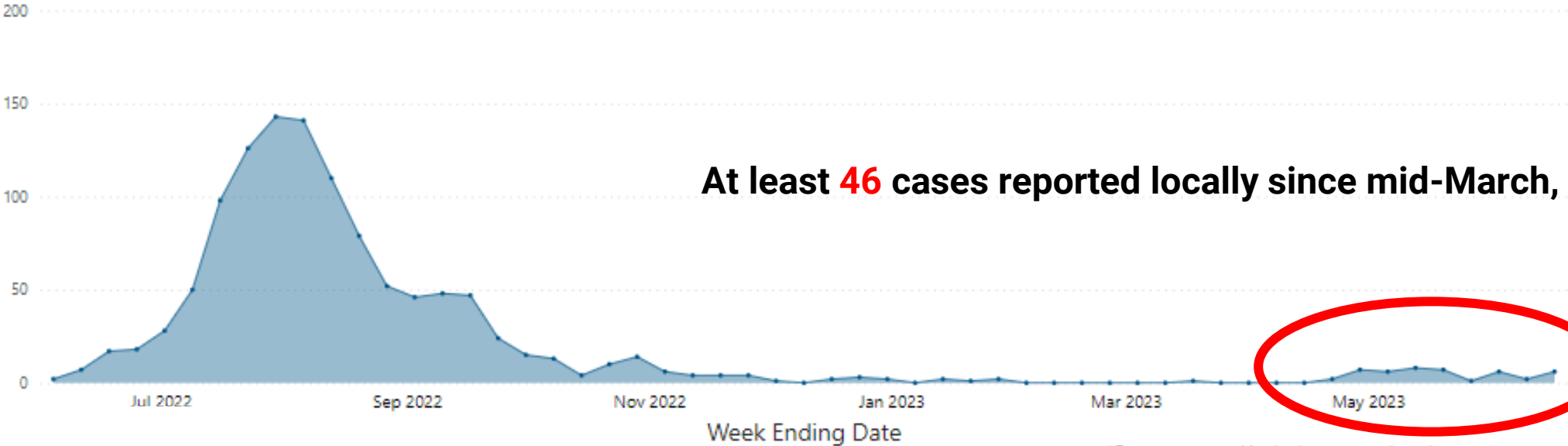
Cases of Mpox Diagnosed in Chicagoans Between 6/4/2022 - 6/21/2023

6 cases were diagnosed last week. This is 200.0% higher than the number of cases diagnosed during the prior week.

Cases
1,169

Hospitalizations
64

Deaths
3



*Data represented in the last reported week are not yet complete.

★ What is mpox?

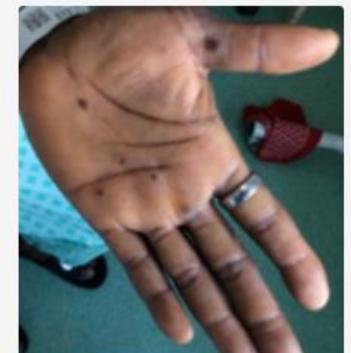
- **Mpox (monkeypox)** is a viral infection, with symptoms that can include a painful and uncomfortable rash or sores, often accompanied with flu-like illness.
- **Mpox is spread through close contact** with body fluids, sores, shared bedding or clothing, or respiratory droplets (kissing, coughing, sneezing).
- **Anyone can get mpox** through close, personal contact with someone who has symptoms of mpox.
- However, the virus has primarily spread through **close-knit social networks of gay, bisexual, and other same gender-loving men.**

- **Common symptoms:** Rash or unusual sores that look like pimples or blisters on the face, body, and genitals, fever, chills, head or muscle aches.

Visual Examples of Monkeypox Rash



Photo Credit: NHS England High Consequence Infectious Disease



Mpox Vaccine 101

- The **JYNNEOS™ vaccine** can help protect people against mpox (monkeypox) when given before exposure to the virus. CDPH strongly encourages those eligible to get the vaccine to protect themselves and others.
- The vaccine is a **two-dose vaccine given under the skin 28 days apart**. Optimal protection is not achieved until two weeks following the second dose.

Eligibility

Have had **close contact** with someone diagnosed with MPV regardless of sex, gender or sexual orientation

OR

Are a **gay, bisexual, or other man who has sex with men and/or transgender person** who is sexually active.

- Find your vaccine: [CDPH Mpox Vaccine Finder](#)

Chicago Mpox (Monkeypox) Vaccination Summary



Data last updated: 6/26/2023. Counts include doses administered through 6/24/2023.

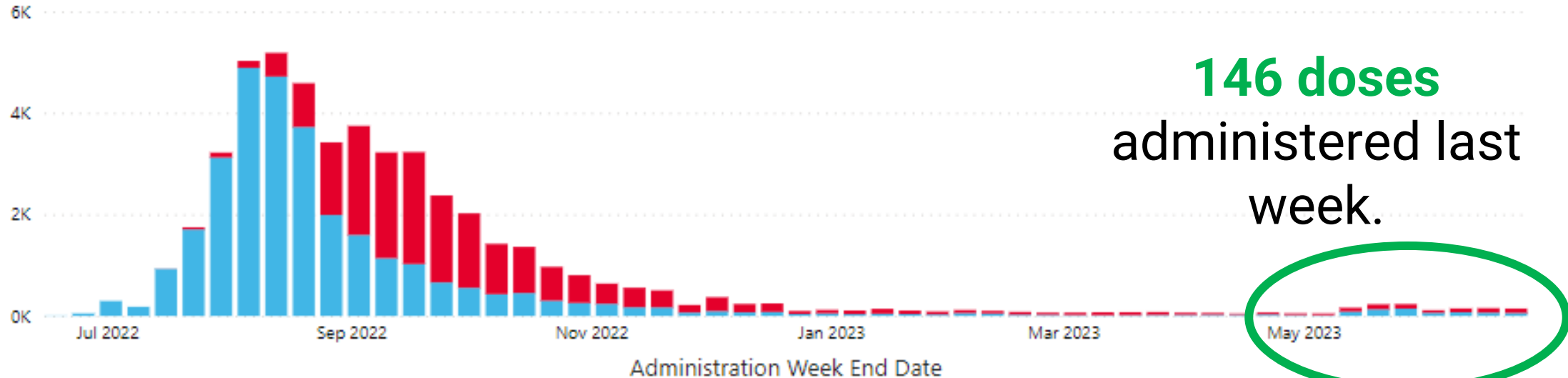
Data are updated on Mondays at 2:00 p.m., except for City holidays. All data are provisional and subject to change.

Doses of Mpox Vaccine Administered to Chicagoans Between 6/18/2022 - 6/24/2023

146 doses were administered last week. This is 4.6% lower than the number of doses administered during the prior week.

All Doses	First Doses	Second Doses
49,351	30,134	19,217

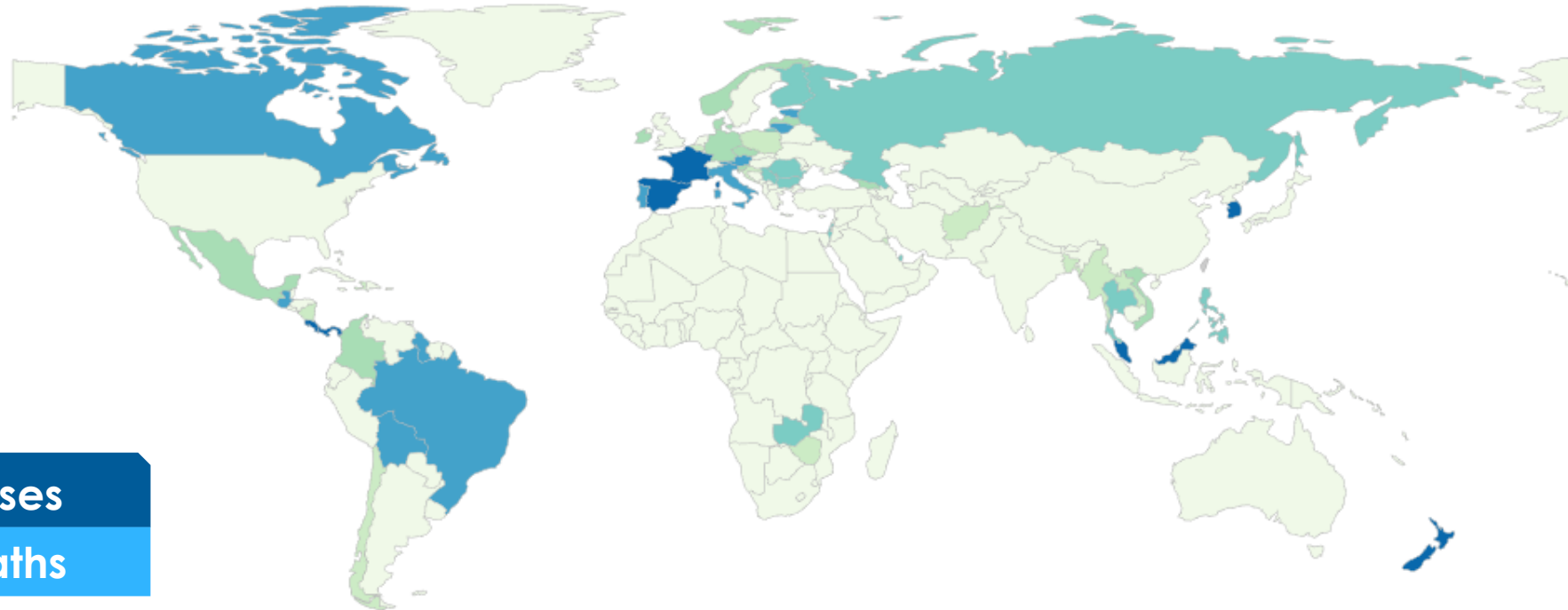
Dose Number ● 1 ● 2



★ Where can I go to learn more about mpox?

- **Mpox (Monkeypox) Website and Data Dashboard:** www.chicago.gov/mpox
- **HIV/STI Resource Hub (LGBTQ+ call center):** [844-482-4040](tel:844-482-4040)
- **CDPH Call Center:** [312-746-4835](tel:312-746-4835)

★ Weekly COVID-19 cases per 100,000 population

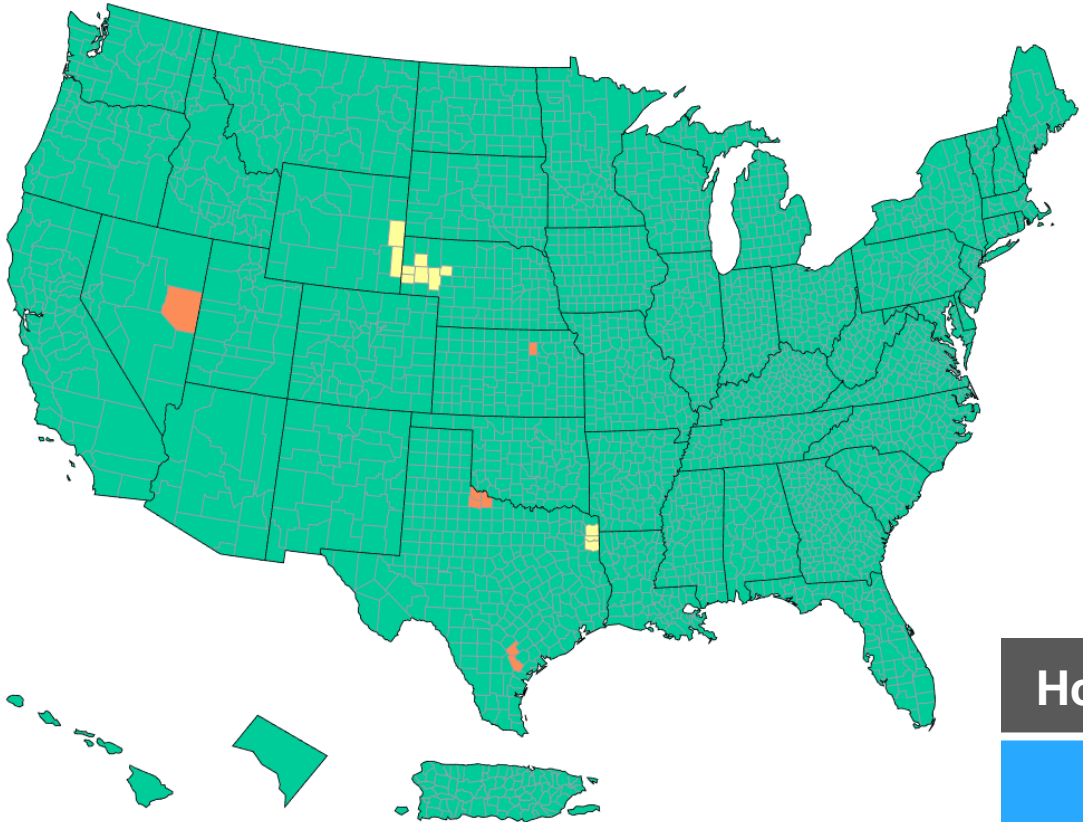


768 Million Cases
6.9 Million Deaths

13.4 Billion Vaccine Doses Administered
5.5 Billion Vaccinated



★ Weekly COVID-19 hospitalizations per 100,000 population

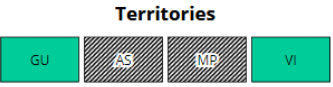


National currently:
2.00 diagnosed weekly admissions per 100,000 people

Illinois currently:
1.40 diagnosed weekly admissions per 100,000 people

Chicago currently:
1.40 diagnosed weekly admissions per 100,000 people

	<u>Past Week</u>	<u>Total</u>
Hospital Admissions	6,649 (-8%)	6,183,075
Deaths	447 (-24%)	1,135,565



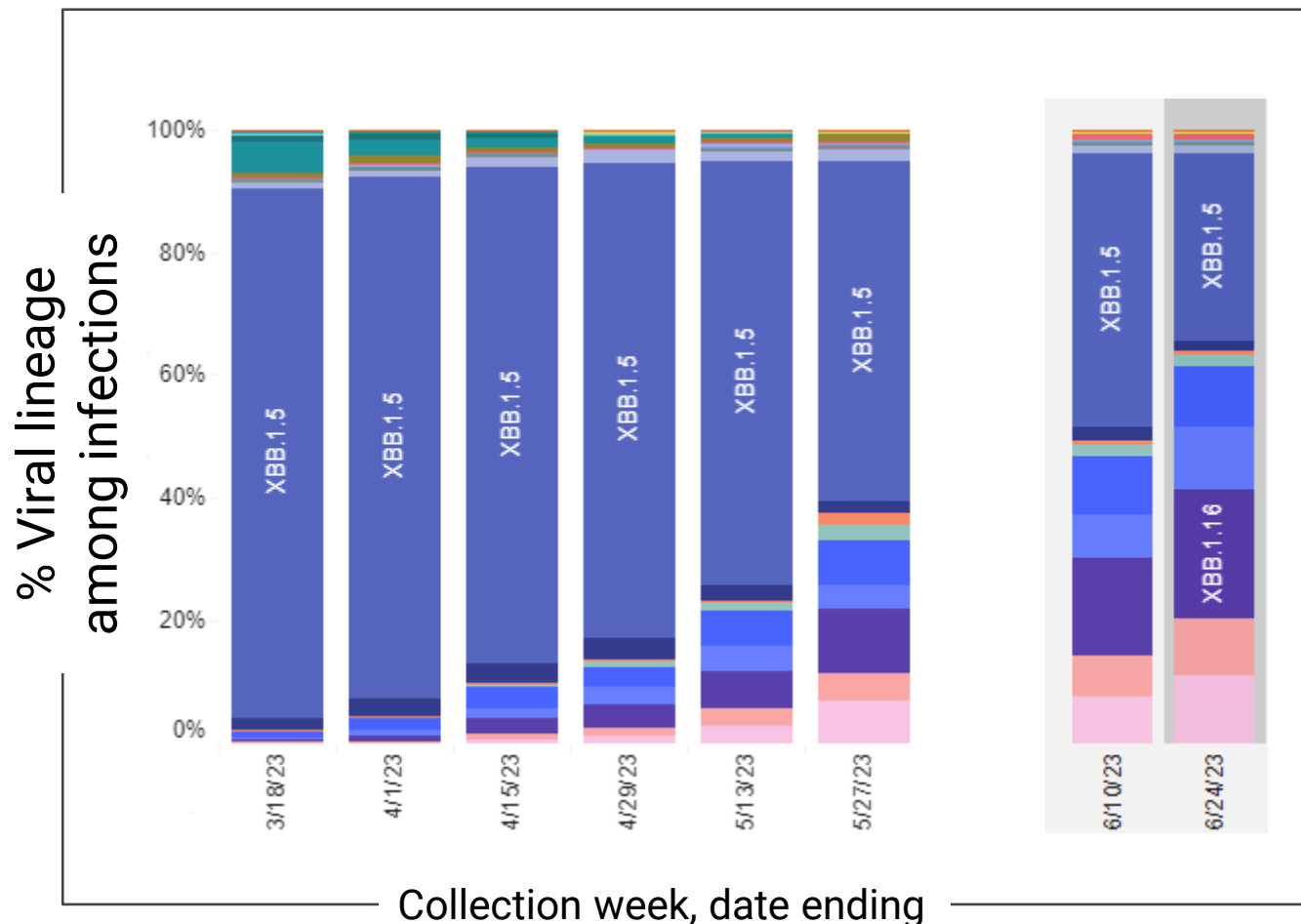
● Low (<10.0) ● Medium (10.0 to 19.9) ● High (≥20.0) ▨ Insufficient data

Variant Surveillance, Midwest Region

Weighted and Nowcast Estimates for Weeks of 3/18/23 – 6/24/23



It's ALL Still OMICRON



XBB.1.5	30.5%	26.5-34.8%	
XBB.1.16	21.2%	17.1-25.9%	
XBB.1.9.2	10.1%	5.5-17.5%	
XBB.1.9.1	9.8%	7.8-12.3%	
XBB.2.3	11.1%	5.5-20.7%	
XBB.1.16.1	9.1%	6.2-13.3%	
EU.1.1	1.3%	0.5-3.3%	
FE.1.1	0.6%	0.3-1.3%	
XBB.1.5.68	1.9%	1.0-3.7%	
XBB.1.5.1	1.8%	1.1-2.9%	
XBB.1.5.10	0.5%	0.2-1.2%	
XBB	1.4%	0.8-2.3%	

★ CDC Hospital Admission Level for Cook County is at **LOW**

Cook County's [COVID-19 Hospital Admissions Level](#) was not updated by CDC this week. Based on local data sources, the admission level remains low.

Last Week's Hospital Admission Level (6/4-6/10)

1.5 New COVID-19 Admissions per 100,000

Admission Level for 2 Weeks Ago (5/27-6/3)

2.7 New COVID-19 Admissions per 100,000

● Low (<10.0) ● Medium (10.0 to 19.9) ● High (≥20.0) ▨ Insufficient data

Other Metrics for Cook County (6/4-6/10)*

518 Reported New COVID-19 Cases

-48%

9.82 Reported New Cases per 100,000

3 New COVID-19 Deaths

-33%

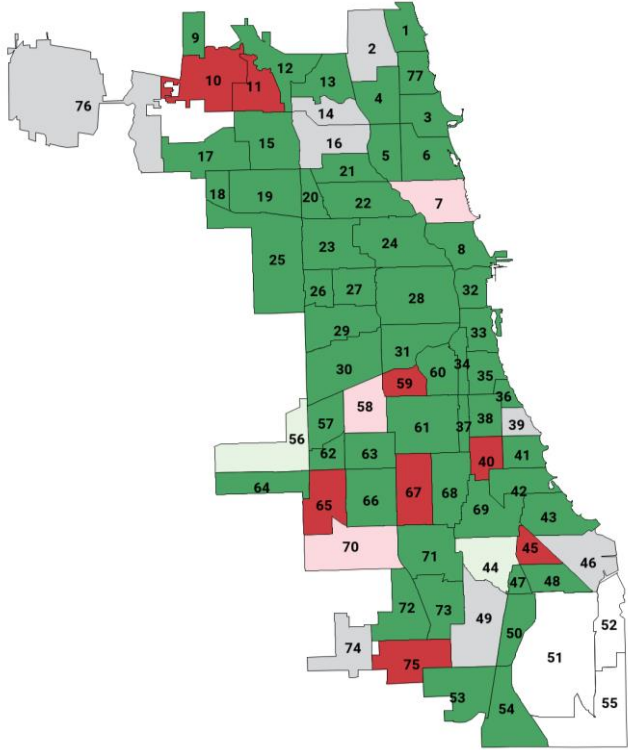
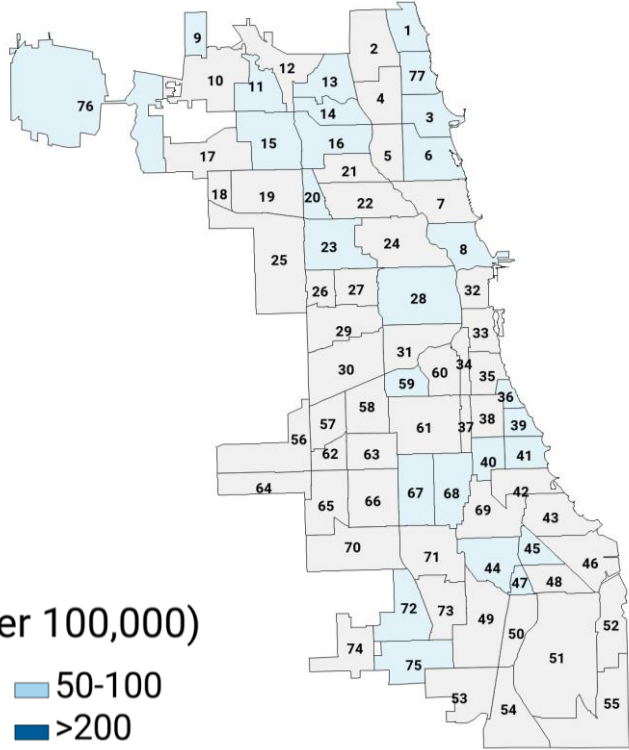
0.06 New Deaths per 100,000

See [CDC COVID Data Tracker: Maps by Geographic Area](#) for more details

*Other metrics are estimates based on cases reported into the Illinois Electronic Disease Surveillance System (I-NEDSS)

★ Lab-confirmed COVID cases are VERY low in every community area – with most also still decreasing

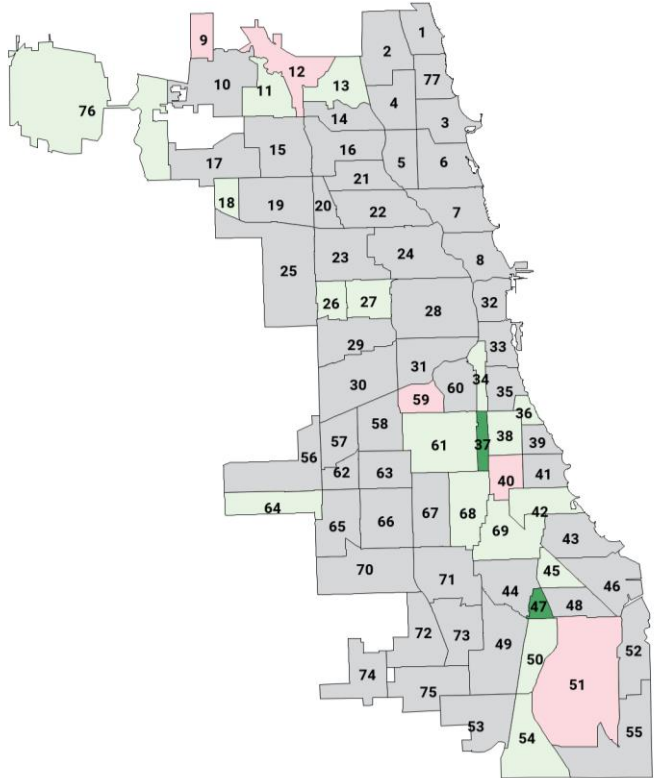
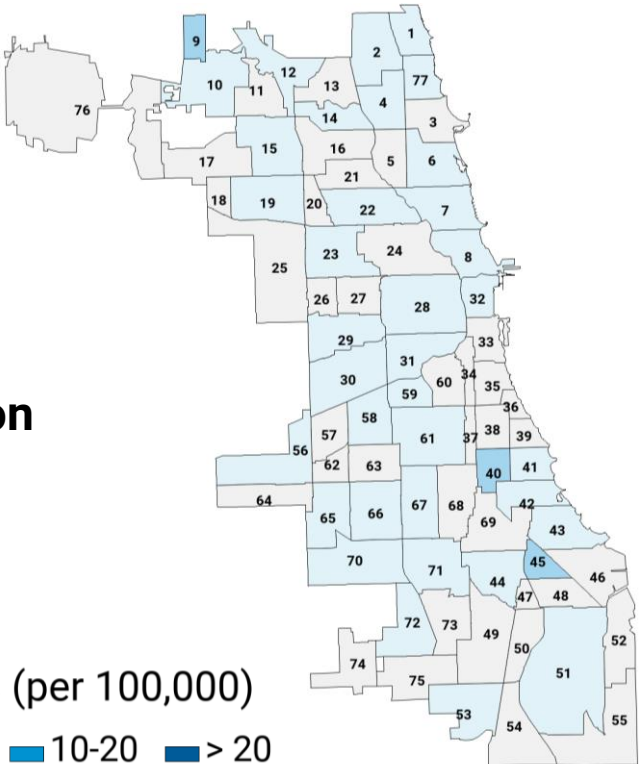
Average weekly case rate for the past 2 weeks
6/3/2023 – 6/17/2023



Source:
Includes cases among Chicago residents reported into the Illinois Electronic Disease Surveillance System (I-NEDSS) with date of specimen collection up to 6/10/2023.

★ COVID hospitalization rates are largely both low and stable

Average weekly hospitalization rate for the past 2 weeks
6/3/2023 – 6/17/2023



Source: Includes cases among Chicago residents reported into the Illinois Electronic Disease Surveillance System (I-NEDSS) with date of specimen collection or admission date up to 6/17/2023.



Chicago Lab-Based Early Alert Signals for week of 6/21 have decreased from the previous week

Indicator	Thresholds			Chicago Current Values Week of 6/21
	Low Concern	Medium Concern	High Concern	
SARS-CoV-2 variant assessment, Chicago (combines log growth rate and VOC designation)	Stable lineage proportions, no VOC/VOHC	Variant or lineage increasing, no VOC/VOHC	Variant rapidly increasing, or VOC/VOHC	Low (Last week: Medium)
Average wastewater score among sampled sites, Chicago (combines viral concentration and trend)	< 2	2-3	> 3	Low (Last week: Low)

Variants/subvariants currently increasing in prevalence locally (As of 6/21/2023)

XBB.1.5

- Sublineage of XBB with additional mutations that conferred increased transmissibility. Emerged quickly starting in the US Northeast and overtook other circulating lineages.
- RIPHL Logistic growth rate 6/21/2023: 0.031 per day; Doubling time 22 days (low)

XBB.1.5.1

- Sublineage of XBB.1.5 containing 1 additional amino acid mutation in spike.
- RIPHL Logistic growth rate 6/21/2023 : 0.027 per day; Doubling time 25 days (low)

XBB.1.9.1

- Sublineage of XBB with similar mutation profile to XBB.1.5.
- RIPHL Logistic growth rate 6/21/2023 : 0.028 per day; Doubling time 25 days (low)

XBB.1.16

- Sublineage of XBB containing 3 additional mutations in spike. Emerged and rapidly rose in frequency in India.
- RIPHL Logistic growth rate 6/21/2023 : 0.048 per day; Doubling time 14 days (low)

XBB.2.3

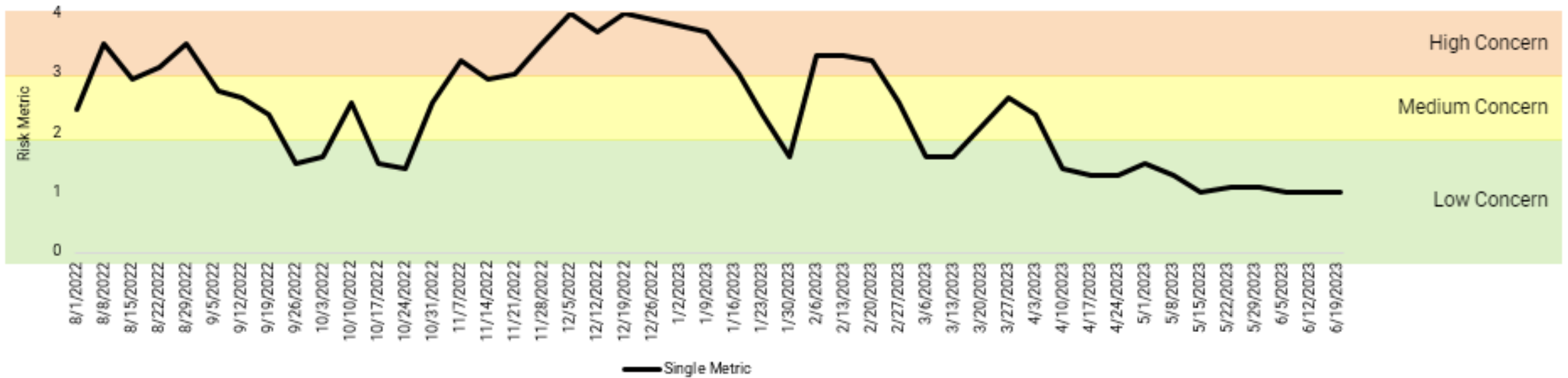
- Sublineage of XBB with 5 additional mutations, including 3 in spike. Most prevalent in Singapore and India.
- RIPHL Logistic growth rate 6/21/2023 : 0.046 per day; Doubling time 15 days (low)

Emerging VOC: Variant of Concern. VOHC: Variant of High Consequence.



SARS-CoV-2 wastewater metric for week of 6/21 demonstrate a **LOW** concern level

Wastewater SARS-CoV-2 Metric Trend for All of Chicago

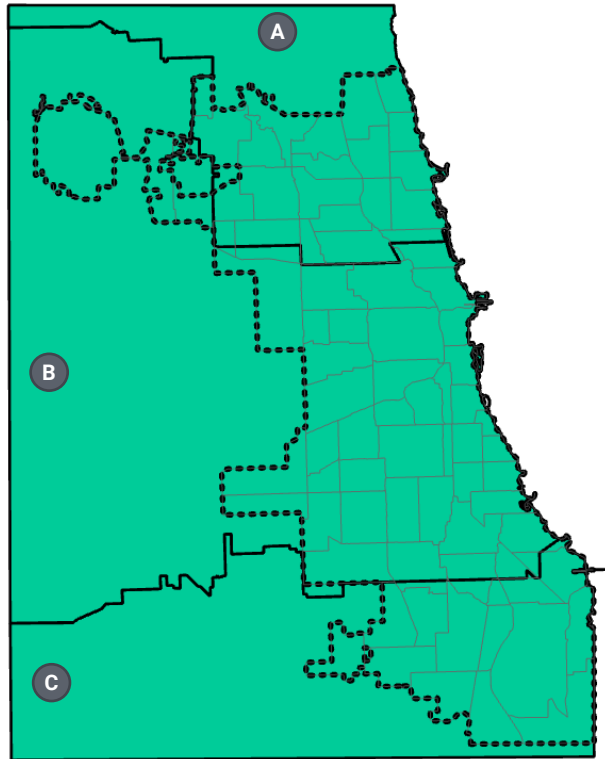




HIGHER SARS-CoV-2 concern levels were detected from the Norwood Park – Jefferson Park sewer site, and **MEDIUM** concern levels were seen at the Little village and Lakeview - Uptown sewer sites. **LOW** concern levels were seen across all other sewer sites and treatment plants.

Wastewater Treatment Plants

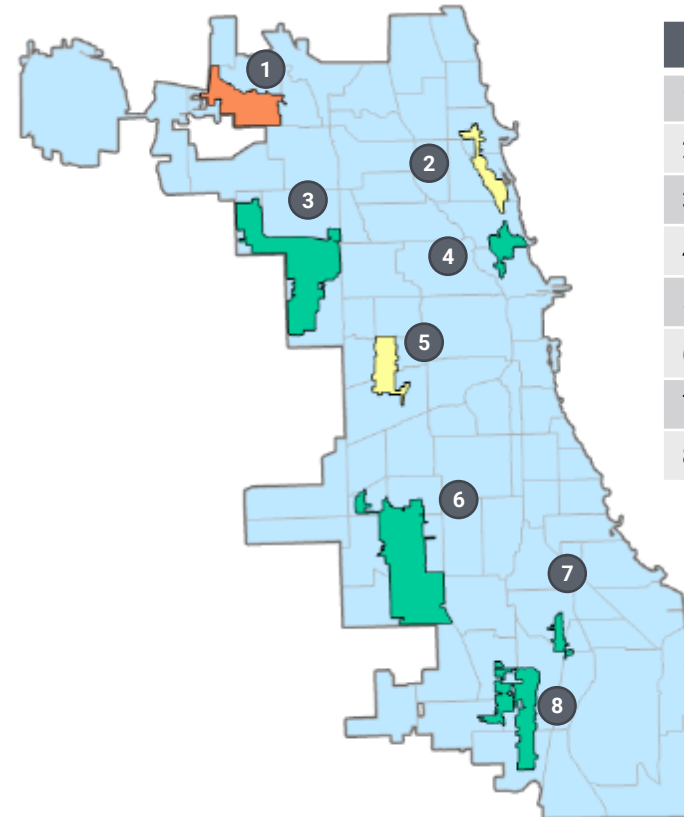
#	Catchment
A	Terrence J. O'Brien
B	Stickney
C	Calumet



Wastewater treatment plant catchment areas exceed Chicago city borders (dashed boundaries) and cover also other Cook county municipalities.

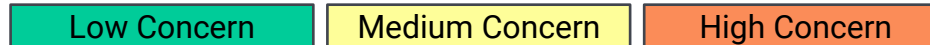
The actual coverage areas are wider but trimmed in this figure.

Sewer sites



#	Catchment
1	Norwood Park - Jefferson Park
2	Lakeview - Uptown
3	Austin - Montecclare
4	Lincoln Park - Near North Side
5	Little Village
6	Chicago Lawn - Ashburn
7	Chatham
8	Roseland - West Pullman

*Data for Week of 6/19

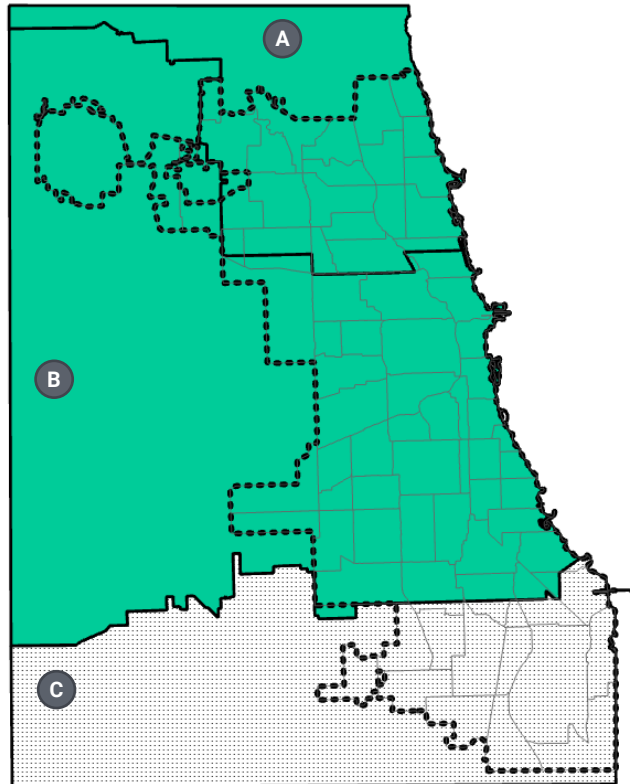




No Influenza A detections were seen at the Calumet treatment plant and Norwood Park – Jefferson park and Chicago Lawn – Ashburn sewer sites. All other treatment plants and community sewer sites have **LOW** Influenza A concern.

Wastewater Treatment Plants

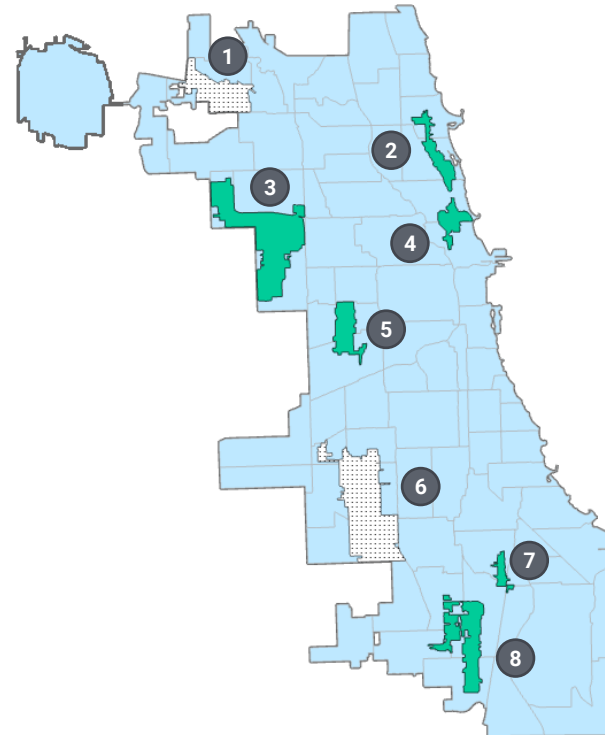
#	Catchment
A	Terrence J. O'Brien
B	Stickney
C	Calumet



Wastewater treatment plant catchment areas exceed Chicago city borders (dashed boundaries) and cover also other Cook county municipalities.

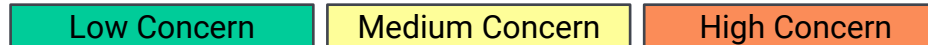
The actual coverage areas are wider but trimmed in this figure.

Sewer sites



#	Catchment
1	Norwood Park - Jefferson Park
2	Lakeview - Uptown
3	Austin - Montecclare
4	Lincoln Park - Near North Side
5	Little Village
6	Chicago Lawn - Ashburn
7	Chatham
8	Roseland - West Pullman

*Data for Week of 6/19





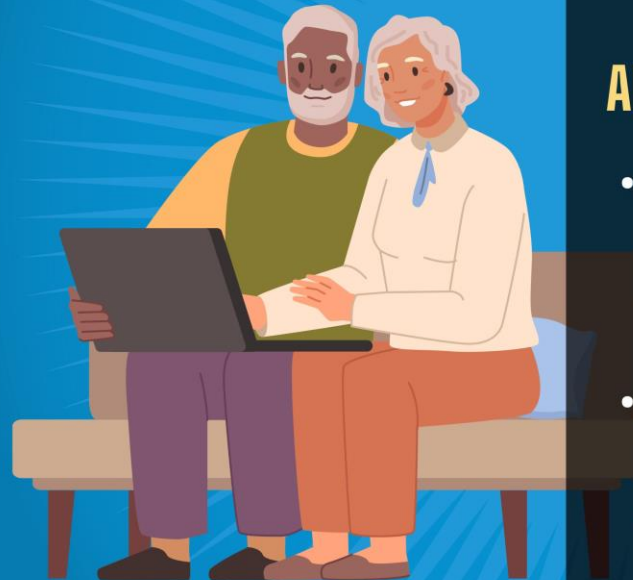
NEVER HAD A COVID-19 VACCINE?

Now, **One Shot** Gets You The Best Protection!



The updated bivalent vaccine is now available to anyone 6 months and older, including those who were not previously vaccinated.

GET YOUR BIVALENT COVID-19 VACCINE TODAY AND BREATHE EASIER KNOWING YOU HAVE THE STRONGEST PROTECTION!



YOU MAY BENEFIT BY GETTING AN ADDITIONAL BIVALENT BOOSTER NOW!

- If you're 65+ years old, and it's been 4 months or more since your last COVID-19 vaccine.
- if you're immunocompromised, and it's been 2 months since your last COVID-19 vaccine.

TAKE ACTION IF YOU TEST POSITIVE FOR COVID-19



DAY 1-5

Stay home:

- Everyone - *regardless of vaccination status* - should stay home and away from others (isolate).

People at high risk for severe illness:
Talk to your doctor about treatment

DAY 6 OR LATER

End isolation:

- If you never had symptoms OR symptoms are improving and are fever-free for 24 hours.

DAY 6-10

Wear a mask:

- If you take 2 antigen tests 48 hours apart and both are negative, you may remove your mask sooner
- Avoid people at high risk of getting very sick



VAX & PAX lovid



If you're at high risk for severe illness, vaccines are your best protection against COVID-19. But if you do test positive, **TREATMENTS ARE AVAILABLE.**

PAXLOVID, for example, is an oral antiviral therapy for the treatment of mild to moderate COVID-19.



Individuals ages 12 and up who are at high risk of developing severe illness, are eligible.

Ask a healthcare provider if medications to treat COVID-19 are right for you.



Continues to operate
Saturday and Sunday
8am-6:30pm

GET YOUR UPDATED

COVID BOOSTER & FLU SHOT AT HOME



In-home vaccination is available to all Chicago households at no cost. Up to 10 people can be vaccinated, so invite your family, friends, or neighbors to get vaccinated together.



Need help and don't know where to turn?



211MetroChicago.org





Need a vaccine or a booster?
Have questions?

visit

CHI.GOV/COVIDVAX

or call

312-746-4835



JUNE 27, 2023

Combating Health Misinformation

Katrine Wallace, PhD



What is health misinformation?

- False or misleading statements according to the scientific consensus, research and evidence we have at the time
- Misinformation undermines public health by sowing doubt and spreading unfounded fears



Social media algorithms and misinformation

- On social media platforms, engagement drives how often you see specific content
- Algorithm driven platforms are designed to keep people on the app
 - Favors viral content
 - Misinformation very often gets more views over evidence and data
 - Vaccine misinformation often goes extremely viral because it is sensationalized



What can I personally do to help?

- ✓ Verify before you amplify
- ✓ Know that misinformation can often be hard to detect
- ✓ Understand that you influence your network with everything you post or share



What if my friends or family believe and share misinformation?

- ✓ Explain your concern
- ✓ Listen
- ✓ Empathize without shaming
- ✓ Point them to credible info



Conclusion

All of us are vulnerable to misinformation, but all of us can help!

Little Red Riding Hood [REDACTED]
[REDACTED]
[REDACTED]
[REDACTED] lived with a wolf [REDACTED]
[REDACTED]
[REDACTED]
[REDACTED]
[REDACTED]
[REDACTED] and she lived happily ever after.

MISINFORMATION WILL ONLY TELL YOU PART OF THE STORY